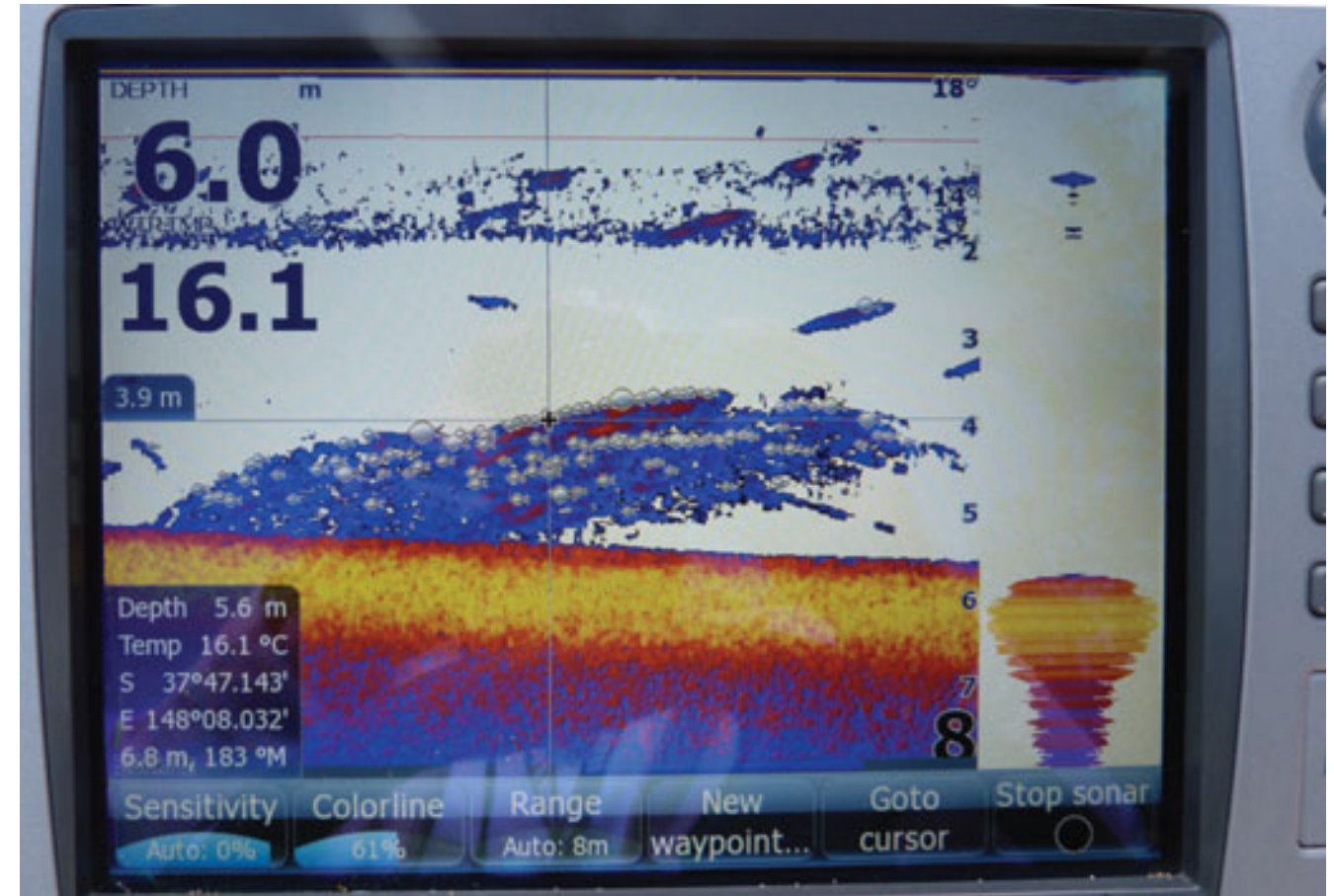


Breaming With The Facts



Above: They just can't hide from Lowrance - screen shot from Frank's indispensable HDS-10 showing the graphic detail he relies upon, to keep his charter customers happy. Below: River2Sea Baby vibe works a treat in our estuaries.

It's no secret that for East Gippsland estuaries like Lake Tyres, Bemm River and Mallacoota, black bream are one of our most unpredictable species when it comes to successful luring on a consistent basis.

These wily piscatorial critters have excellent eye sight, amazing lateral senses, and on a bad fishing day, will have you questioning when and where you went wrong.

A lot of my first time charter guests are at wit's ends to discover a constant method of success in targeting black bream on lures, and luckily, for the most part, I'm able to ease their burden and show them an effective method of lure fishing that can tempt a range of species.

So in the following paragraphs I've compiled a list of facts not to be overlooked when planning your next

There's no doubt about TBM's favorite SE Australian fishing nut, Frank Milito - if there is a way to catch them thar pesky sou'east black bream - he's gonna find it! Better still, he's here to share his professional knowledge as a top estuary charter skpper about how he does it, what with, when and how - so you can take the mob out next weekend and dramatically improve your catch:effort ratio, help balance the family budget, fight off the carbon tax blues - and roar past 'GO' collecting heaps of bragging points JIT for the next BBQ.

encounter with the highly respected Southern Black Bream.

Fact 1: Finding Fish (Thanks, Mr Lowrance!)

As a charter operator, one of the most important tools of my trade is a quality sounder, and specifically, I would have to recommend the Lowrance HDS series.

I have been using a HDS-10 with structure scan for almost 3 years, and I just can't stress enough how much time the Lowrance saves me in locating fish.

It also helps identify sizes of fish, their distribution within the density of population, a process which almost eliminates fishing dead or unproductive water.

The HDS-10 has two particular functions that I rely on most. The first is Down Scan, that as the name suggests, identifies what's swimming from directly underneath

